



HISTORIC HOTELS  
of AMERICA  
NATIONAL TRUST FOR HISTORIC PRESERVATION

## If 19<sup>th</sup> CENTURY BRICK WALLS and WOOD CEILINGS COULD TALK...

If 19th century brick walls and wood ceilings could talk, they would speak a familiar narrative. Enterprise & industry. American vision. An honest day's work for an honest day's pay. The buildings that make up Cork Factory Hotel once housed the historic Armstrong Cork and Kerr Glass companies. Today, the hotel preserves and honors that history. And it is not just in the architecture, it's the attitude: honest, authentic, and welcoming.

### THOUGHTFUL ACCOMMODATIONS

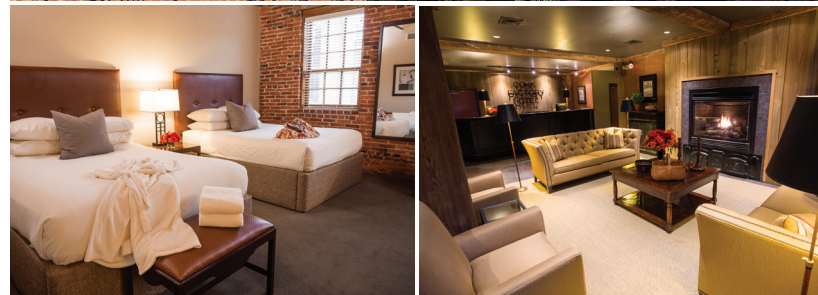
Original brick interiors and exposed wood ceilings are made modern and inviting with thoughtful details. Cork Factory Hotel's beautifully converted guest rooms and suites are purposefully minimalist. Neutral colors and lush fabrics complement the rugged, historic lines on display throughout the guest rooms and common areas.

### HOTEL AMENITIES

- 93 guest rooms and suites
- Fitness center
- Complimentary Wi-Fi
- 100% non-smoking rooms
- Guest computer in lobby
- Meeting and event facilities
- Free on-site parking
- Accessible accommodations and amenities

### LOCATION

Cork Factory Hotel is conveniently located in the City of Lancaster, but just a short drive from major highways and scenic countryside bountiful with Amish heritage. Discover the dynamic art galleries, businesses, shops, theaters, golf courses, and nightlife hotspots nearby. Cork Factory Hotel is also minutes away from Lancaster County Convention Center.



### LOCAL FLAVOR AT CORK & CAP RESTAURANT

717.735.2025    [CORKANDCAPRESTAURANT.COM](http://CORKANDCAPRESTAURANT.COM)

Rural heritage and fresh food coalesce at Cork & Cap. Our guiding tenet pays homage to the Pennsylvania Dutch who settled in Lancaster County. It is simple, yet uncompromising: make food from scratch with the best local ingredients available using simple recipes and time-honored techniques.

We offer Lancaster County-inspired cuisine in a memorable, casual-hip setting. Dine in plush leather banquettes alongside restored brick and stone walls, lounge in Cork & Cap's rustic bar area, or enjoy seasonal outdoor dining on our patio around Urban Place's signature smokestack.

Visit [corkandcaprestaurant.com](http://corkandcaprestaurant.com) for menus and hours.

480 New Holland Ave, Suite 3000 · Lancaster, PA 17602 · 717.735.2075 · [CORKFACTORYHOTEL.COM](http://CORKFACTORYHOTEL.COM)

Contact us at [INFO@CORKFACTORYHOTEL.COM](mailto:INFO@CORKFACTORYHOTEL.COM)



## A SPACE to GATHER...

You can gather in any place with four walls, but preserved within those of Cork Factory Hotel is a timeless historical sentiment that radiates warmth and comfort. Over a century and a half in the making and built on the backs of industrial giants, our walls are nevertheless adaptable to accommodate each group's size, type, or personality. Cork Factory Hotel offers extensive catering menus, an onsite pastry team, and a professional event staff that provide a flawless event and enhance your guests' experience.

Gatherings are all about people coming together, and no walls should confine the possibilities.



### YOUR WEDDING DESTINATION

Your future and our heritage unite to create a distinctive and unforgettable experience. Contact [weddings@corkfactoryhotel.com](mailto:weddings@corkfactoryhotel.com) to begin planning your beautiful forever.

## EVENT SPACES

### THE BALLROOM, PARLOR & TERRACE

Guests will find themselves mesmerized under the lighting of rustic chandeliers and ready to celebrate on a hardwood dance floor. Beautiful vaulted ceilings with exposed rafters are accentuated with a large brick fireplace to create an intimate space.

### THE WAREHOUSE

Shimmering cork-lined walls, ceiling-high windows, and large mirrors that reflect natural light make for an engaging meeting or festive celebration.

### ASSEMBLY ROOM

Perfect for intimate gatherings, the cork-lined Assembly Room accommodates meetings and celebrations with warm tones and exposed brick walls adorned with rustic evidence of its industrial history.

### THE BAKER'S TABLE

The best parties always end up in the kitchen, and at The Baker's Table, it's also where the party begins. With a large community table at the center of the bakery and antique baking tools arranged around the space, you and your guests will feel right at home.

### THE 1865 ROOM

The 1865 Room blends the timeless ease of Cork & Cap into a private event space overlooking the factory. The 1865 Room was specifically designed for effortless entertaining, and with walls adorned with period industrial art, it is sure to keep guests of any event talking of their return.



OCCUPANCIES	BANQUET	CONFERENCE	U-SHAPE	CLASSROOM	THEATER	RECEPTION
ASSEMBLY ROOM 940 sq. ft.	50	35	25	50	80	65
WAREHOUSE 2,300 sq. ft.	120	60	45	90	200	250
BALLROOM* 5,225 sq. ft.	180/300*	88	56	100	225	300/400+*
THE BAKER'S TABLE	40	20	-	-	-	45
THE 1865 ROOM	30	-	-	-	-	-

\* Ballroom can be combined with Terrace and/or Parlor to increase occupancies

Begin planning your gathering today.  
Contact us at 717.735.2075 or [INFO@CORKFACTORYHOTEL.COM](mailto:INFO@CORKFACTORYHOTEL.COM)